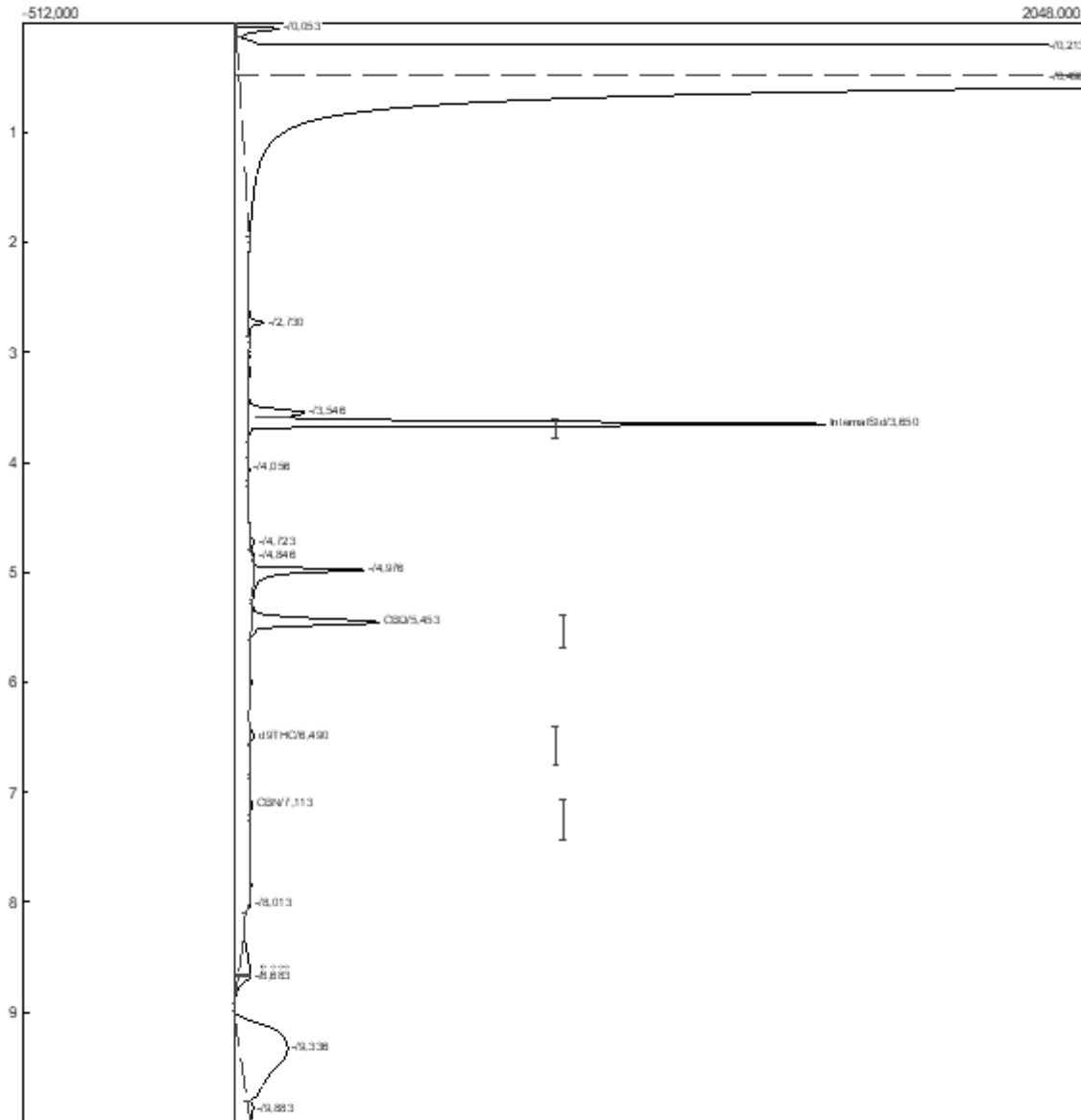


Lab name: Olympianshemp  
 Sample: 6% CBD in hemp seed oil



Component	Retention	Area	Internal	Units
InternalStd	3,650	3839,8647	100,0000	
CBD	5,453	1345,2038	6,0864	%
d9THC	6,490	61,1062	0,1969	%
CBN	7,113	23,6281	0,0707	%
		5269,8028	106,3540	